



"Instrumental to the Power and Process Industries Since 1961" *Tel (787) 622-7080 *Fax (787) 721-5762

ENECON®

Advanced polymer products for rebuilding, resurfacing and protecting all types of equipment, structures and fluid flow machinery.

equipment repairs

METALCLAD high-performance polymers repair, resurface and protect against wear, erosion and corrosion. Cost-effective, commercially proven on pumps, valves, piping, tanks, cooling towers, propellers, thrusters, Kort nozzles, rudders, etc.

THE METALCLAD FAMILY OF PRODUCTS



CeramAlloy™ CL+AC (Advanced Composite)

The most advanced polymer composite coating system available! Outstanding erosion / corrosion resistance! Repairs damaged equipment - protects new components.



CeramAlloy™ CP+AC (Advanced Composite)

Engineered to repair deeply damaged / eroded fluid flow components. Repair & rebuild all types of equipment back to original contour! Cures to metal hard, ceramic-like finish.



CeramAlloy™ CBX (Advanced Composite)

Engineered to repair deeply damaged components. Repair & protect all types of equipment subject to very aggressive abrasion.



CeramAlloy™ CL+ NUCLEAR D.B.A. Tested ASTM 3911-89

The most advanced polymer composite coating system available! Repairs and resurfaces equipment damaged by erosion / corrosion. Protects new components.



CeramAlloy™ CP+ NUCLEAR D.B.A. Tested ASTM 3911-89

Engineered to repair and rebuild damaged / eroded fluid flow components. Cold curing, trowelable, safe and easy to use, 100% solids.



SpeedAlloy™ For FAST Leak Repairs and MORE!

The first choice for fast, reliable mechanical repairs. Available in unique, convenient ENECON 'A-Packs'.



SpeedAlloy™ QS The Super Fast Leak Stopper!

Seals Leaks in Minutes Without Heat. Unlimited shelf life. 100% solids, safe & simple to use.



DurAlloy™

Repairs to all types of machinery and equipment: Trowelable / machinable - a permanent bond to virtually any rigid surface: metal, plastic, glass, ceramics, wood, concrete and more!

concrete repairs

ENECRETE products rebuild, repair and resurface concrete, tile, brick, terrazzo, slate, marble, granite, etc. as well as water and leak control - fast setup times even can even stop running water under hydrostatic pressure!

THE ENECRETE FAMILY OF PRODUCTS



DuraQuartz™

The finest concrete repair and protection system available. Superior strength, durability and adhesion. Bonds to any rigid surface. Outstanding abrasion / impact resistance. Excellent chemical resistance.



ENECRETE WP®

The jobsite leak plugger that stops running water in under 60 seconds!

Repair and waterproofing for masonry structures in hydrostatic pressure applications.



ENECRETE WS®

The water sealer for porous masonry walls. The jobsite waterproofer and leak sealer that coats, fills, seals & protects porous masonry walls in hydrostatic pressure, below-grade applications.



DuraFill™

The finest broadcast flooring system available. Also ideal for bulk-fill applications. Extraordinary adhesion to virtually any type of mineral substrate as well as most metals.

M. R. Franceschini, Inc.
611 Condado Ave.
San Juan, PR 00907-3819
www.mrfpr.com



cavitation repairs

THE FLEXICAD FAMILY OF PRODUCTS

FLEXICLAD elasto-ceramic materials repair fluid flow components that have been damaged by erosion / corrosion accelerated by cavitation attack.



DuraTough™ DL

Resurfacing, coating & protecting fluid flow components subject to cavitation damage. Superior strength, durability and adhesion with flexibility, abrasion resistance and elongation.



DuraTough™ DP

Rebuilds equipment damaged by cavitation to original shape and contour. Superior strength, durability and adhesion with flexibility, abrasion resistance and elongation. 100% solids, trowelable.

chemical protection

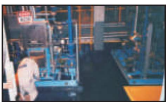
THE CHEMCLAD FAMILY OF PRODUCTS

CHEMCLAD high performance polymer coatings have been specifically designed to protect machinery, equipment and plant structures from aggressive chemical attack.



CHEMCLAD® SC

Protects surfaces from chemical attack. Concrete, metal, wood, rigid plastics, etc. For most standard industrial environments where mild acids, alkalis, bleach, oils, gasoline, etc. are present.



CHEMCLAD® XC

Extraordinary protection in some of the most aggressive chemical environments. It is the finest room temperature cured, chemical protection coating system on the market.

floors and structures

THE ENECLAD FAMILY OF PRODUCTS

ENECLAD hi-performance polymer coatings provide superlative bonding and protective properties particularly formulated for use in flooring and structural applications.



ENECLAD® FPS-2000

The ultimate floor protection system for a new era. Extreme floor protection for extreme environments. Effectively used to protect aircraft hangar floors, mechanical rooms, warehouse floors and more.



ENECLAD® SuperBond

Extraordinary adhesion to difficult-to-bond-to substrates. Bonds to problem materials like never before: smooth stainless and aluminum, galvanized surfaces, granite, ceramic tiles even glass!



ENECLAD® SPS (Self Priming Screed)

Prime, seal and smooth rough concrete surfaces in one simple step. Specifically formulated to smooth out rough concrete surfaces.



ENECLAD® CFS (Clear Floor Sealer)

Seal and dustproof concrete without any odor. Two component, 100% solids clear concrete sealer.

advanced roof repairs

THE ENESEAL FAMILY OF PRODUCTS

ENESEAL HR advanced polymer products provide excellent encapsulation, protecting all types of structures and materials from oils, water damage and physical injury.



ENESEAL® HR

Repair roof problem areas, reduce solar heat load & protect insulation! Ceramic-filled, liquid membrane dries to a seamless, flexible, durable, moisture resistant, breathable 'skin'. Extraordinary heat refractive properties provides for significant energy savings by reducing surface temperatures on roof structures due to solar heat.

environmental corrosion steel protection

THE ENESEAL FAMILY OF PRODUCTS

ENESEAL CR is a surface tolerant, UV resistant, liquid elastomeric coating system that provides extraordinary corrosion resistance to all types of steel work.



ENESEAL® CR

ENESEAL® CR is a 'surface tolerant' coating system that does not require abrasive blasting prior to application. It is a corrosion as well as UV resistant, flexible coating that can provide extraordinary environmental protection to structural steel and concrete surfaces. It also bonds very well to galvanized surfaces.